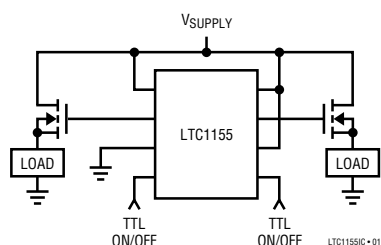


PRODUCT	PACKAGES	FUNCTION	MIN V_{SUPPLY}	MAX	COMMENTS
LTC [®] 1153	8-Pin PDIP, SO	Electronic Circuit Breaker	4.5V	18V	Has Adjustable Reset Time
LTC1154	8-Pin PDIP, SO	Single High-Side Driver	4.5V	18V	Single Version of LTC1155
LTC1155	8-Pin PDIP, SO	Dual High-Side Driver	4.5V	18V	Good for Power Management
LTC1156	16-Pin PDIP, SO	Quad High-Side Driver	4.5V	18V	Good for Multiple Supply Switching
LTC1157	8-Pin PDIP, SO	Dual 3.3V High-Side Driver	2.7V	6V	Good for 3.3V Power Management
LT [®] 1158	16-Pin PDIP, SO	Half-Bridge Driver	4.5V	30V	Synchronous Switching Regulators Too
LT1161	20-Pin PDIP, SW	High Voltage Quad Driver	8V	48V	For Industrial and Automotive
LTC1163/65	8-Pin PDIP, SO	Low Voltage Triple Driver	1.8V	6V	For 2 AA Cells Up to 5V Supply
LT1089	TO-220, TO-3	7.5A High-Side Switch	4.0V	20V	Low loss, Low I_Q
LT1188	TO-220, TO-3	1.5A High-Side Switch	5.0V	30V	Good for Automotive
LTC1255	8-Pin PDIP, SO	Dual High-Side Driver	9.0V	24V	Good for Industrial Control
LT1336	16-Pin PDIP, SO	Half-Bridge Driver	9.0V	20V	Built-In Boost Regulator, Up to 100% Max Duty Cycle. Floating Top Driver Switches Up to 75V

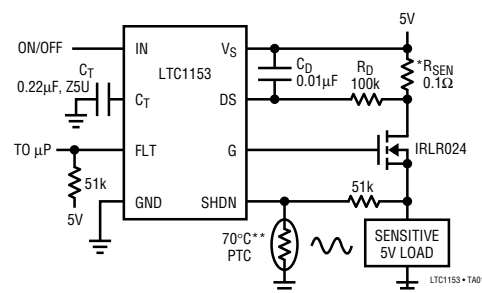
LTC1155: Dual High-Side Switching in SO-8 Package

All Surface Mount, No Driver External Parts



- No External Parts
- Space Saving SO-8 Package (Dual)
- Short-Circuit Protection
- 8 μ A OFF, 80 μ A ON
- Drives Low Cost N-Channel MOSFETs (No Heat Sinks)
- Logic Interface
- Use LTC1157 for Low Voltage Applications

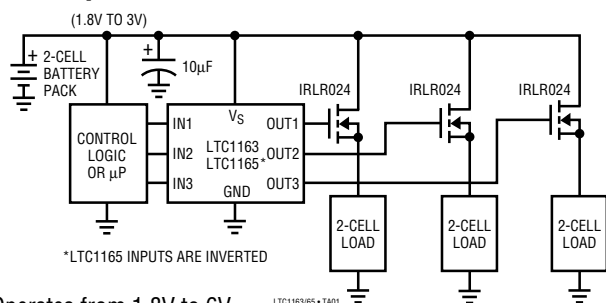
LTC1153: Electronic Circuit Breaker



ALL COMPONENTS SHOWN ARE SURFACE MOUNT.
 * IMS026 INTERNATIONAL MANUFACTURING SERVICE, INC. (401) 683-9700
 ** RL2006-100-70-30-PT1 KEYSTONE CARBON COMPANY (814) 781-1591

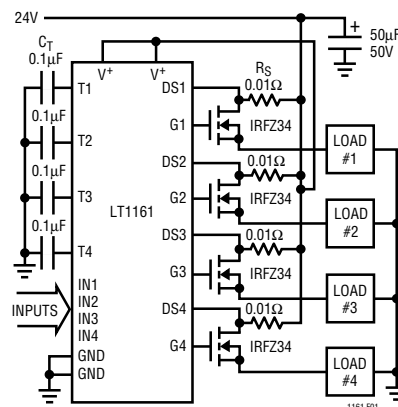
- Programmable Trip Time
- Programmable Reset Time
- Programmable Trip Current
- Fault Output for μ P Monitoring
- Over Temperature Sensing Using Thermistor

LTC1163/LTC1165: Triple N-Channel Switch Driver Operates Down to 1.8V



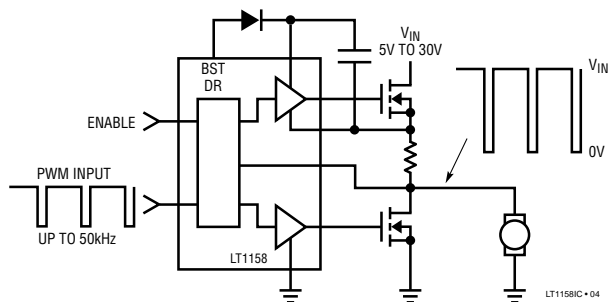
- Operates from 1.8V to 6V
- 0.01 μ A Standby Current
- 95 μ A Operating Current per Channel at 3.3V
- Fully Enhances N-Channel Switches
- No External Charge Pump Components
- Easily Protected Against Supply Transients
- Controlled Switching ON and OFF Times
- Compatible with 3V Logic Families
- Available in 8-Pin SO
- LTC1165 Inverting Inputs Simulate P-Channel Switching

LT1161: Quad High Voltage, High-Side Switch Driver Operates to 48V+



- Fully Enhances N-Channel MOSFET Switches
- 8V to 48V Power Supply Range
- Protected from -15V to +60V Supply Transients
- Individual Short Circuit Protection
- Individual Automatic Restart Timers
- Programmable Current Limit, Delay Time, and Auto Restart Period
- Internal Gate Drive Limiting
- Defaults to Off State with Open Input
- Available in 20-Lead PDIP or SO Package

LT1158 Half-Bridge N-Channel Power MOSFET Driver

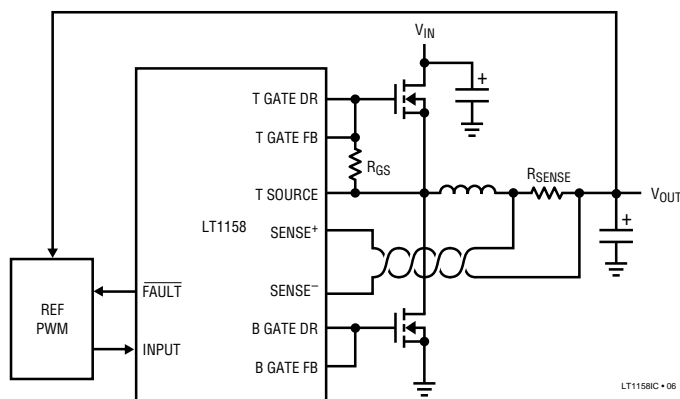


LT1158 Motor Control Features

- Adaptive Gate Drive Prevents Shoot-Through and Excessive Power Dissipation
- Continuous Current Limit with Autorestart After Shutdown
- 150ns Switching Times at 3000pF Loads
- Designed for Driving Harsh Loads
- Sign Magnitude or Locked Antiphase Full-Bridge Designs Easily Implemented Using Two LT1158s
- Available in 16-Lead SO
- Use LT1336 for Top Switch Up to 60V

LT1158 Step-Down Switching Regulator Applications

Adding Synchronous Switching to a Step-Down Switching Regulator



APPLICATION CIRCUIT	DATA SHEET FIGURE	I _{OUT}	V _{IN}	V _{OUT}	COMMENTS
LT1158/LT1431 Current Mode Constant Off-Time	10 and 12	≥1A	5V-10V 8V-24V	≥2.5V 5V	Low Cost General Purpose
LT1158/LT1431/CMOS 555 Voltage Mode	11	≥1A	5V-10V	≥2.5V	Lowest Dropout Constant Frequency
LT1158/LT3525 Voltage Mode	13	≥3A	10V-30V	≥5V	Highest Voltage Constant Frequency

- Efficiency >90%
- Current Sense Protection
- High Current Capability

Choose the Right High-Side N-Channel MOSFET Driver for Your Application

